

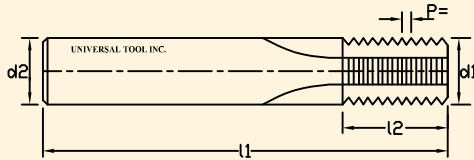
UNI THREAD 805

SOLID CARBIDE THREAD MILL ISO METRIC (Fine Thread)

ISO metric fine thread DIN 13 (For internal threads)

Specification :

Also offered in helical Flute design & thro' coolant.



Order No.	D	P mm	d1	L1	L2	d2	Z	Prices
805- M3	M3	0.5	2.4	48	10	6	3	
805- M3.5	M3.5	0.6	2.4	48	10	6	3	
805- M4	M4	0.7	3.15	48	12	6	3	
805- M5	M5	0.8	3.9	48	12	6	3	
805- M6	M6	1.0	4.8	54	16	6	3	
805- M8	M8	1.25	6.5	54	20	8	3	
805- M10	M10	1.5	8.2	64	24	10	4	
805- M12	M12	1.75	9.9	72	25	10	4	
805- M14	M14	2.0	11.6	80	29	12	4	
805- M16	M16	2.0	13.6	80	33	14	4	
805- M18	M18	2.5	14.80	92	31	16	4	
805- M20	M20	2.5	17.10	102	40	18	4	
805- M24	M24	3.0	19.90	102	45	20	4	

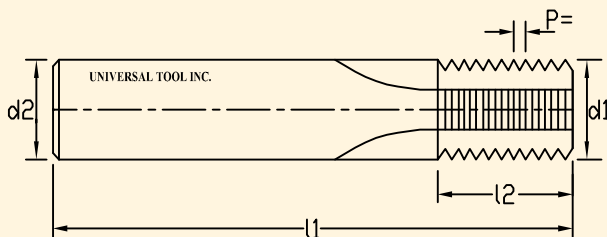
UNI THREAD 806

SOLID CARBIDE THREAD MILL ISO METRIC COURSE (COARSE THREAD)

ISO metric fine thread DIN 13 (For internal threads)

Specification :

Also offered in helical Flute design & thro' coolant.



Contd

(UNI THREAD 806) SOLID CARBIDE THREAD MILL ISO METRIC COURSE (COARSE THREAD)

Order No.	D	P	d1	L1	L2	d2	Z	Prices
806- M3	M3	0.5	2.4	48	10	6	2	
806- M4	M4	0.5	3.15	48	10	6	3	
806- M5	M5	0.5	3.9	54	12	6	3	
806- M6A	M6	0.5	4.8	54	12	6	3	
806- M6B	M6	0.75	4.8	54	12	6	3	
806- M8A	M8	0.5	6.5	54	16	6	3	
806- M8B	M8	0.75	6.5	54	16	8	3	
806- M8C	M8	1.0	6.5	54	16	8	4	
806- M10A	M10	1.0	8.2	64	20	10	4	
806- M10B	M10	1.25	8.2	64	20	10	4	
806- M12A	M12	1.0	9.9	72	24	10	4	
806- M12B	M12(M18)	1.5	9.9	72	24	10	4	
806- M14	M14	1.5	11.6	80	29	12	4	
806- M16	M16	1.5	13.6	80	33	14	4	
806- M18	M18	1.5	14.8	92	31	16	4	
806- M20	M20	2.5	17	102	40	18	4	
806- M24	M24	3.0	19.9	102	45	20	4	

UNI THREAD 807

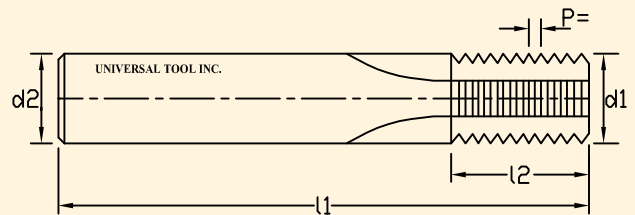
SOLID CARBIDE THREAD MILL - BSP (G)

British Standard taper Pipe thread (For internal threads)

ISO228 / BS.2779

Specification :

Also offered in helical Flute design & thro' coolant.



Order No.	D	P tpi	d1	L1	L2	d2	Z	Prices
807- G1/16	G1/16	28	5.9	57	10	6	3	
807- G1/8	G1/8	28	7.65	64	10	8	3	
807- G1/4	G1/4	19	9.90	72	15	10	3	
807- G3/8	G3/8	19	11.15	80	15	14	4	
807- G1/2	G1/2	14	14.25	92	22	16	4	
807- G3/4	G3/4	14	14.25	92	22	16	4	
807- G1	G1	11	19.6	102	28	20	4	
807- G1/2	G1/2	11	19.6	102	28	20	4	
807- G2	G2	11	19.6	102	28	20	4	
807- G21/2	G21/2	11	19.6	102	28	20	4	

Contd

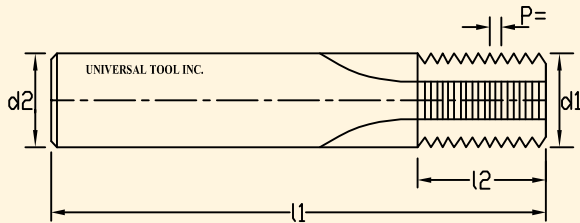
UNI THREAD 802

SOLID CARBIDE THREAD MILL - UNF

unified national thread ANSI B 1.1

Specification :

Also offered in helical Flute design & thro' coolant.



Order No.	D	P	d1	L1	L2	d2	Z	Prices
		tpi						
802-UNF NO. 8	UNF NO.8	36	3	48	8.5	6	3	
802-UNF NO.10	UNF NO.10	32	3.80	48	9.5	6	3	
802-UNF NO. 8	UNF NO.12	28	4.30	48	10.9	6	3	
802-UNF 1/4	UNF 1/4	28	5.15	54	12.7	6	3	
802-UNF 5/16	UNF 5/16	24	3.58	54	17.5	6	3	
802-UNF 3/8	UNF 3/8	24	6.68	64	20.6	8	3	
802-UNF 7/16	UNF 7/16	20	9.60	64	24.8	8	3	
802-UNF 1/2	UNF 1/2	20	11.10	72	27.3	10	3	
802-UNF 9/16	UNF 9/16	18	12.5	92	28.2	14	4	
802-UNF 5/8	UNF 5/8	18	12.5	92	28.2	14	4	
802-UNF 3/4	UNF 3/4	16	17.0	102	38.1	18	4	
802-UNF 7/8	UNF 7/8	14	19.90	102	43.5	20	4	
802-UNF 1	UNF 1	12	19.90	102	50.8	20	4	
802-UNF 1-1/2	UNF 1-1/2	12	19.90	102	50.8	20	4	

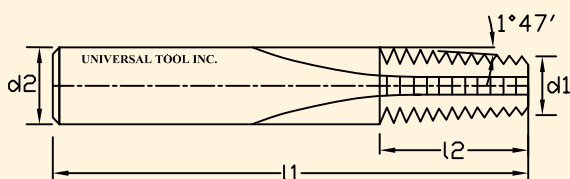
UNI THREAD 803

SOLID CARBIDE THREAD MILL - NPT (NPT-THREAD)

American Standard taper Pipe thread
ANSI B1.20.1,taper 1:16 - (USAS BZ.1)
For internal threads

Specification :

Also offered in helical Flute design & thro' coolant.



Contd

(UNI THREAD 803)SOLID CARBIDE THREAD MILL - NPT

Order No.	D	P	d1	L1	L2	d2	Z	Prices
803-NPT 1/16	NPT 1/16	27	5.9	57	9.8	6	3	
803-NPT 1/8	NPT 1/8	27	7.67	64	9.88	8	3	
803-NPT 1/4	NPT 1/4	18	9.9	72	14.82	12	3	
803-NPT 3/8	NPT 3/8	18	11.15	80	14.82	14	4	
803-NPT 1/2	NPT 1/2	14	14.25	92	18	16	4	
803-NPT 3/4	NPT 3/4	14	14.25	92	18	16	4	
803-NPT 1"	NPT 1"	11.5	19.60	104	22	20	4	
803-NPT 1'4	NPT 1'4	11.5	19.60	104	22	20	4	
803-NPT 1'2'	NPT 1'2'	11.5	19.60	104	22	20	4	
803-NPT 2	NPT 2	11.5	19.60	104	22	20	4	
803-NPT 2 1/2	NPT2 1/2	8	19.60	104	32	20	4	
803-NPT 3	NPT 3	8	19.60	104	32	20	4	

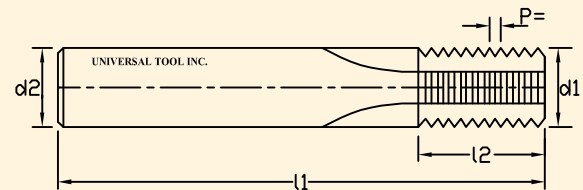
UNI THREAD 804

SOLID CARBIDE THREAD MILL - NPTF NPTF - THREAD

Dryseal American Standard taper pipe thread (ANSI 1.20.3)

Specification :

Also offered in helical Flute design & thro' coolant.

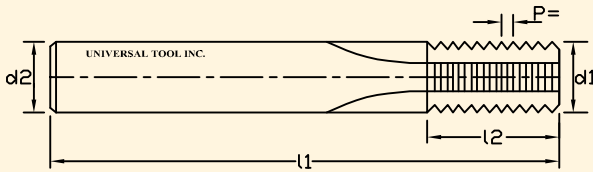


Order No.	D	P	d1	L1	L2	d2	Z	Prices
804-NPT 1/16	NPT 1/16	27	5.9	57	9.4	6	3	
804-NPT 1/8	NPT 1/8	27	7.65	64	9.88	8	3	
804-NPT 1/4	NPT 1/4	18	9.9	72	14.82	12	3	
804-NPT 3/8	NPT 3/8	18	11.15	80	14.82	14	4	
804-NPT 1/2	NPT 1/2	14	14.25	92	18.1	16	4	
804-NPT 3/4	NPT 3/4	14	14.25	102	18.1	16	4	
804-NPT 1"	NPT 1"	11.5	19.6	102	22.1	20	4	
804-NPT 1'4	NPT 1'4	11.5	19.6	102	22.1	20	4	
804-NPT 1 1/2	NPT 1 1/2	11.5	19.6	102	22.1	20	4	
804-NPT 2	NPT 2	11.5	19.6	102	22.1	20	4	
804-NPT 2 1/2	NPT 2 1/2	8	19.6	102	31.7	20	4	
804-NPT 3	NPT 3	8	19.6	102	31.7	20	4	

Contd

UNI THREAD 811

SOLID CARBIDE THREAD MILL- BSW - STRAIGHT FLUTES

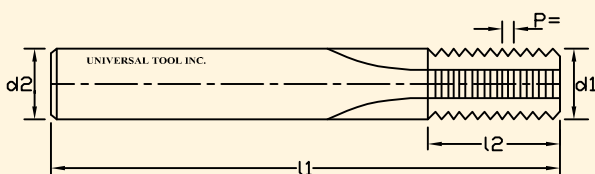


BSW

Order No Min. Dia	P tpi	d2	d1	L1	L2	Z
811-BSW-1/4"	20	6	4.00	57	10.16	3
811-BSW-5/16"	18	6	5.00	57	11.29	3
811-BSW-3/8"	16	6	5.90	57	14.29	3
811-BSW-7/16"	14	8	7.90	63	18.14	3,5*
811-BSW-1/2"	12	8	7.90	63	19.05	3,5*
811-BSW-5/8"	11	10	9.90	72	23.09	5
811-BSW-3/4"	10	12	11.90	83	27.94	5
811-BSW-7/8"	9	12	11.90	83	28.22	5
811-BSW-1"	8	16	15.90	92	38.10	5
811-BSW-1 1/8"	7	16	15.90	92	36.29	5
811-BSW-1 3/8"	6	16	15.90	92	38.10	5
811-BSW-1 5/8"	5	20	19.90	104	40.64	5
811-BSW-1 7/8"	4.5	20	19.90	104	39.51	5

UNI THREAD 812

SOLID CARBIDE THREAD MILL- BSP

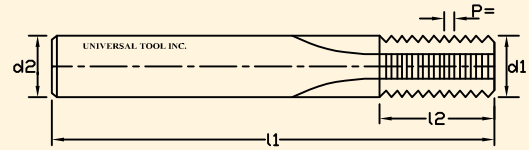


BSP

Order No Min. Dia	P tpi	d2	d1	L1	L2	Z
812-BSP-1/16"	28	6	5.90	57	14	3
812-BSP-1/4"	19	8	7.90	63	18	3
812-BSP-1/2"	14	12	11.90	83	30	5
812-BSP-1"	11	16	15.90	92	35	5

UNI THREAD 813

SOLID CARBIDE THREAD MILL- AMERICAN UNEF

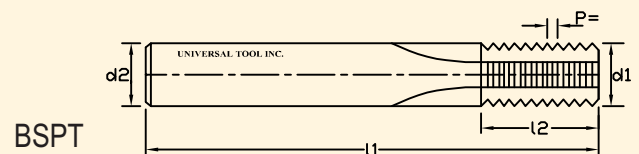


American UNEF

Order No	P tpi	d2	d1	L1	Z	L2
813-UNEF-No.12-3/8"	32	4	3.3	45	3	11.1
813-UNEF-7/16"	28	4	3.8	45	3	11.8
813-UNEF-1/2"	28	4	3.8	45	3	11.8
813-UNEF-7/16"	28	6	4.6	57	3	12.7
813-UNEF-1/2"	28	6	4.6	57	3	12.7
813-UNEF-7/16"	28	10	9.2	73	4	22.7
813-UNEF-1/2"	28	10	9.2	73	4	22.7
813-UNEF-9/16"-11/16	24	4	2.9	45	3	10.6
813-UNEF-9/16"-11/16	24	4	3.5	45	3	11.6
813-UNEF-9/16"-11/16	24	6	5.7	57	3	15.9
813-UNEF-9/16"-11/16	24	8	7.4	63	3	19.1
813-UNEF-9/16"-11/16	24	12	11.9	83	4	28.6
813-UNEF-3/4"-1"	20	4	3.9	45	3	12.7
813-UNEF-3/4"-1"	20	10	8.5	73	4	22.9
813-UNEF-3/4"-1"	20	10	9.9	73	4	25.4
813-UNEF-3/4"-1"	20	16	15.9	92	5	38.1
813-UNEF-11/16"-1 11/16	18	6	5.2	57	3	16.9
813-UNEF-11/16"-1 11/16	18	12	11.3	83	4	29.6
813-UNEF-11/16"-1 11/16"	18	12	11.9	83	4	32.5

UNI THREAD 814

SOLID CARBIDE THREAD MILL- BSPT

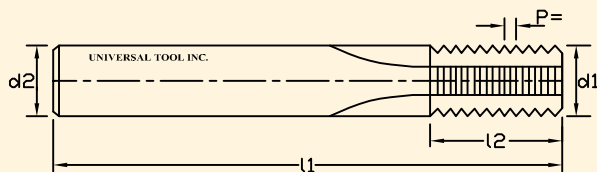


BSPT

Order No	P tpi	d2	d1	L1	L2	Z
814-BSPT-1/16"	28	6	5.8	57	16.3	3
814-BSPT-1/8"	28	8	7.7	63	20.0	3
814-BSPT-1/4"	19	10	9.9	73	26.7	4
814-BSPT-3/8"	19	16	13.4	92	33.4	4
814-BSPT-1/2"	14	16	15.7	92	43.5	5
814-BSPT-3/4"	14	16	15.7	92	43.5	5
814-BSPT-1"	11	20	19.9	104	41.6	5
814-BSPT-1 1/2"	11	20	19.9	104	41.6	5
814-BSPT-2"	11	20	19.9	104	41.6	5
814-BSPT-2 1/2"	11	20	19.9	104	41.6	5

UNI THREAD 808

SOLID CARBIDE THREAD MILL- BSW



BSW

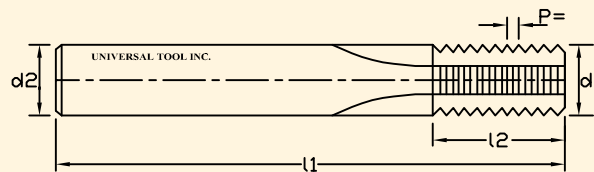
Order No	P tpi	d2	d1	L1	L2	Z	Prices
808-BSW-1/4"	20	6	4.45	57	12.7	3	
808-BSW-5/16"	18	6	5.85	57	15.5	3	
808-BSW- 3/8"	16	8	7.20	61	19.0	3	
808-BSW-7/16"	14	10	8.50	73	21.8	3	
808-BSW-1/2"	12	10	9.65	73	25.4	3	
808-BSW-9/16"	12	12	11.25	80	27.5	4	
808-BSW-5/8"	11	14	12.60	92	32.3	4	
808-BSW-11/16"	11	16	14.20	92	34.6	4	

BSF

Order No	P tpi	d2	d1	L1	L1	Z	Prices
808-BSF-1/4"	26	6	5.00	57	12.7	3	
808-BSF-5/16"	22	8	6.35	61	16.2	3	
808-BSF-3/8"	20	6	4.45	57	12.7	3	
808-BSF-3/8"	20	8	7.65	61	19.0	3	
808-BSF-7/16"	18	6	5.85	57	15.5	3	
808-BSF-7/16"	18	10	9.20	73	22.6	3	
808-BSF-1/2"	16	8	7.20	61	19.0	3	
808-BSF-9/16"	16	14	12.15	12	20.6	4	
808-BSF-5/8"	14	10	8.50	73	21.8	3	
808-BSF-11/16"	14	10	8.50	73	21.8	3	
808-BSF-5/8"	14	14	13.40	92	30.8	4	
808-BSF-11/16"	14	14	13.40	92	30.8	4	
808-BSF-11/16"	14	16	15.00	92	34.5	4	
808-BSF-3/4"	12	10	9.65	73	25.4	3	
808-BSF-3/4"	12	12	11.25	80	27.5	4	
808-BSF-3/4"	12	18	16.20	102	38.1	4	
808-BSF-7/8"	11	14	12.60	92	32.3	4	

UNI THREAD 809

SOLID CARBIDE THREAD MILL- BSPT

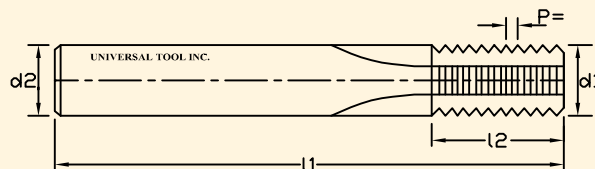


BSPT

Order No	P tpi	d2	d1	L1	L2	Z	Prices
809-BSPT-1/16"	28	6	5.90	57	10.0	3	
809-BSPT-1/8"	28	8	7.65	61	10.0	3	
809-BSPT-1/4"	19	10	9.90	73	14.7	3	
809-BSPT-3/8"	19	12	11.15	73	14.7	4	
809-BSPT-1/2"	14	16	14.25	92	21.8	4	
809-BSPT-3/4"	14	16	14.25	92	21.8	4	
809-BSPT-1"	11	20	19.60	102	27.7	4	
809-BSPT-1 1/2"	11	20	19.60	102	27.7	4	
809-BSPT-2 1/2"	11	20	19.60	102	27.7	4	

UNI THREAD 810

SOLID CARBIDE THREAD MILL- Pg



Pg

Order No	P tpi	d2	d1	L1	L2	Z
810-Pg7	20	8	7.90	63	19.05	3
810-Pg9,	18	10	9.90	72	23.99	5
810-Pg11	18	10	9.90	72	23.99	5
810-Pg13.5	18	10	9.90	72	23.99	5
810-Pg16	18	10	9.90	72	23.99	5
810-Pg21	16	12	11.90	83	28.58	5
810-Pg29	16	12	11.90	83	28.58	5
810-Pg36	16	12	11.90	83	28.58	5
810-Pg42	16	12	11.90	83	28.58	5
810-Pg48	16	12	11.90	83	28.58	5

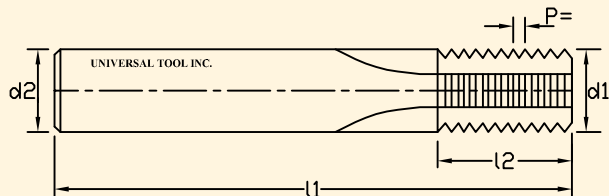
UNI THREAD 801

SOLID CARBIDE THREAD MILL - UNC (FOR INTERNAL THREADS UNC-THREAD)

unified national thread ANSI B 1.1

Specification :

Also offered in helical Flute design & thro' coolant.



Order No.	D	P	d1	L2	L1	d2	Z	Prices
801-UNC NO. 10	UNC NO. 10	24	3.58	48	7.4	6	3	
801-UNC NO.12	UNC NO.12	24	4.15	48	8.5	6	3	
801-UNC 1/4	UNC 1/4	20	4.88	54	8.9	6	3	
801-UNC 5/16	UNC 5/16	18	6.15	54	17.7	6	3	
801-UNC 3/8	UNC 3/8	16	7.65	64	21.4	8	4	
801-UNC 7/16	UNC 7/16	14	9.00	64	24.5	8	4	
801-UNC 1/2	UNC 1/2	13	10.35	72	28.3	10	4	
801-UNC 9/16	UNC 9/16	12	11.80	73	21.2	12	4	
801-UNC 5/8	UNC 5/8	11	13.10	92	32.3	14	4	
801-UNC 3/4	UNC 3/4	10	15.90	92	38.1	16	4	
801-UNC 7/8	UNC 7/8	9	19.00	102	45.2	20	4	
801-UNC 1	UNC1	8	19.90	102	50.8	20	4	

UNI TAP 612

SOLID CARBIDE MACHINE TAP

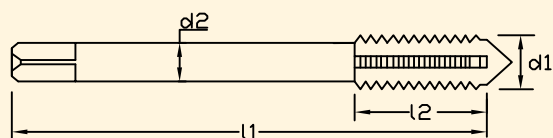
NOTE: ABOVE TOOL WILL BE SUPPLIED IN ST. SHANK

Best for cast iron / bronze copper.

TiN Coated & TiAlN coated.

Any special length & flute length with thro. coolant holes

Also offered on intermediate sizes on request.



Order No	D	Pitch P	Shank d	SQ	Hole	OAL L	L1	Z	Prices
612-M3	M3	0.5	3.5	2.7	2.5	56	11	3	
612-M4	M4	0.7	4.5	3.4	3.3	63	13	3	
612-M5	M5	0.8	6	4.9	4.2	70	16	4	

Contd

Contd

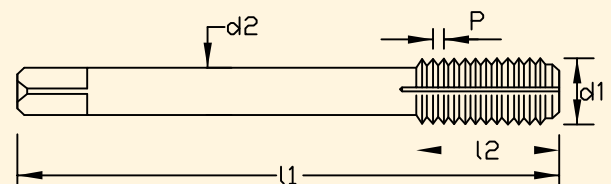
(UNI TAP 612) SOLID CARBIDE MACHINE TAP

Order No	D	Pitch P	Shank d	SQ	Hole	OAL L	L1	Z	Prices
612-M6	M6	1	6	4.9	5	80	19	4	
612-M8	M8	1.25	8	6.2	6.8	90	22	4	
612-M10	M10	1.5	10	8	8.5	100	24	4	
612-M12	M12	1.75	9	7	10.2	110	28	4	
612-M14	M14	2	11	9	12	110	30	4	
612-M16	M16	2	12	9	14	110	32	4	
612-M18	M18	2.5	14	11	15.5	125	34	4	
612-M20	M20	2.5	16	12	17.5	140	34	4	

UNI THREAD 611

SOLID CARBIDE

INTERNAL THREAD FORMER



Order No.	d1	Pitch	OAL	FL	Shank	Prices
611-M3	M3	0.5	56	10	3.5	
611-M4	M4	0.7	63	13	4.5	
611-M5	M5	0.8	70	16	6	
611-M6	M6	1	80	19	6	
611-M8	M8	1.25	90	22	8	
611-M10	M10	1.5	100	24	10	
611-M12	M12	1.75	110	23	9	
611-M14	M14	2.0	110	25	12	
611-M16	M16	2.0	120	28	12	
611-M20	M20	2.5	120	30	14	
611-M22	M22				Size on Request	
611-M24	M24					
611-M26	M26					
611-M28	M28					
611-M30	M30					

The Above tool will be Supplied For Forming The Threads.

Also Carbide Threading Inserts to

- Threads as per -
- ISO METRIC, • UNC, • UNF, • UNEF,
- BSP(G), • BSPT, • NPT, • NPTF, • BSW,
- BSF, • Pg, ACME, MJ Threads Standards.
- Also Offered Helicoil & Spirallock